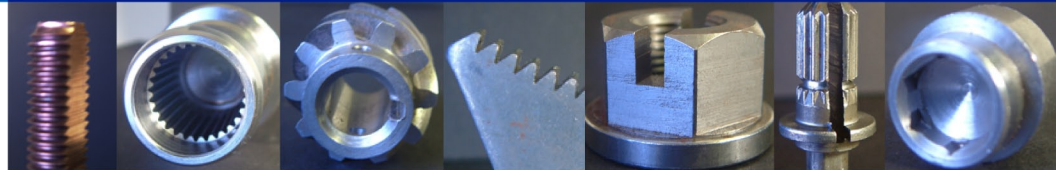


An ISO 9001:2000 Company

The single source for all your broaching needs.



COMPLETE BROACH MANUFACTURING AND / OR HIGH VOLUME OR SHORT RUN PRODUCTION.



- Design
- Fixtures
- Engineering
- Manufacturing
- Tool Management
- On-Site Troubleshooting
- New, Recondition, Sharpen
- Copper, Brass, Stainless, Aluminum, Plastics, Steel

Since 1976 we have been serving the broaching needs of industry. Today we have a 2-shift operation employing over 40 people in two plants. We have unparalleled broach making capabilities including engineering, design, reconditioning and sharpening of all broach tools. Our production facility can accommodate all volumes of production for every conceivable industry. We can tool any job from start to finish and enjoy a reputation for superior quality and service.

25755 D'Hondt Court,
Chesterfield, Michigan
48051-2602

Phone: 586.949.3775
Fax: 586.949.2088